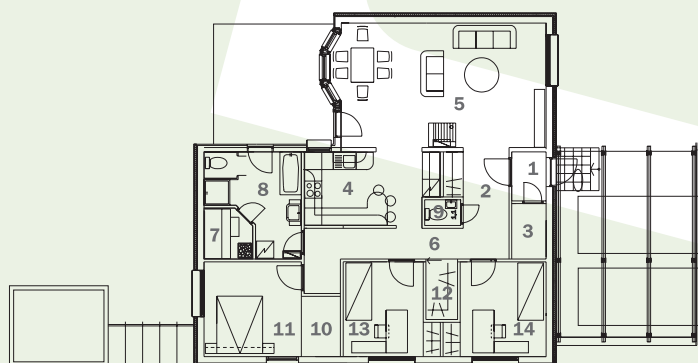


An L-shaped dwelling for a family of 3 to 4 persons. A spacious Hall, livingroom and kitchen are all connected with each other. A bay window makes the livingroom more lively. There are 3 bedrooms in the house. Doors to the terrace are in the livingroom and in the bathroom-householdroom. The house has a bright-colored weatherboarding.

| | |
|---------------------|----------------------|
| Total area | 113,2 m ² |
| Roof incline | 15° |
| Dimensions | 12,20 x 17,40 m |



| | | |
|-----------|-----------------------|---------------------|
| 1 | Vestibule | 2,0 m ² |
| 2 | Hall | 7,1 m ² |
| 3 | Technical room | 2,3 m ² |
| 4 | Kitchen | 11,6 m ² |
| 5 | Living room | 32,0 m ² |
| 6 | Corridor | 7,5 m ² |
| 7 | Steam-room | 2,8 m ² |
| 8 | Shower bath | 9,6 m ² |
| 9 | WC | 1,1 m ² |
| 10 | Walk-in closet | 2,3 m ² |
| 11 | Bedroom | 11,3 m ² |
| 12 | Walk-in closet | 2,9 m ² |
| 13 | Bedroom | 10,0 m ² |
| 14 | Bedroom | 10,7 m ² |

Copying and using the project in whatsoever manner is forbidden without permission of AS Matek.

AS Matek reg nr 10377272, Peterburi tee 81, 11415 Tallinn, Estonia. Phone +372 622 0077. E-mail matek@matek.ee, <http://www.matek.ee>
Pärnu factory Savi 12, 80010 Pärnu, Estonia. Phone +372 447 7888.