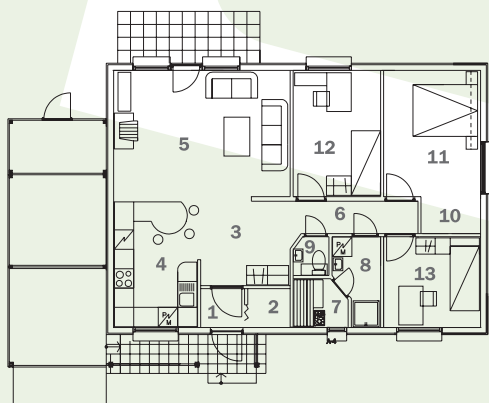




An economical dwelling for a family of 3 to 4 persons. A hall, livingroom and kitchen are all connected with each other. From livingroom a door leads to the terrace. There are 3 bedrooms and a sauna in the house. The house has a bright-colored weatherboarding.

Total area 86,0 m²
Roof incline 15°
Dimensions 15,00 x 9,60 m

1	Vestibule	1,6 m ²
2	Storeroom	1,6 m ²
3	Hall	7,2 m ²
4	Kitchen	10,3 m ²
5	Living room	21,4 m ²
6	Corridor	4,0 m ²
7	Steam-room	2,4 m ²
8	Shower bath	3,5 m ²
9	WC	1,3 m ²
10	Walk-in closet	2,1 m ²
11	Bedroom	11,7 m ²
12	Bedroom	10,5 m ²
13	Bedroom	8,4 m ²



Copying and using the project in whatsoever manner is forbidden without permission of AS Matek.

AS Matek reg nr 10377272, Peterburi tee 81, 11415 Tallinn, Estonia. Phone +372 622 0077. E-mail matek@matek.ee, <http://www.matek.ee>
Pärnu factory Savi 12, 80010 Pärnu, Estonia. Phone +372 447 7888.