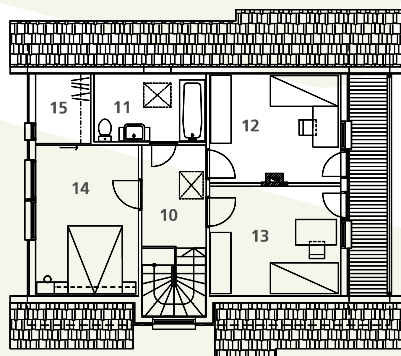
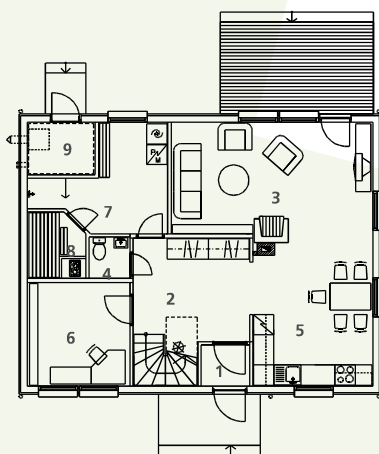




An economical house for a family of 3 or 4 people. Ground floor includes a spacious entrance hall/stairway, a dining room with open kitchen and the living room. First floor: a study, sauna and housekeeping room as well as a toilet. Access to the terrace from the living room. Top floor: stairway, three bedrooms, bathroom and walk-in closet adjacent to the master bedroom. The house has wooden external lining and tiled roof.

Total area	126,2 m ²
Roof incline	45°
Dimensions	10,20 x 7,80 m

1.	Vestibule	1,7 m ²
2.	Hall	10,2 m ²
3.	Living room	19,3 m ²
4.	WC	1,4 m ²
5.	Kitchen	15,8 m ²
6.	Study	9,2 m ²
7.	Housekeeping room	9,0 m ²
8.	Steam-room	3,1 m ²
9.	Technical room	3,1 m ²
10.	Hall	5,6 m ²
11.	Bathroom	6,6 m ²
12.	Bedroom	12,2 m ²
13.	Bedroom	12,3 m ²
14.	Bedroom	13,3 m ²
15.	Walk-in closet	3,3 m ²



Copying and using the project in whatsoever manner is forbidden without permission of AS Matek.

AS Matek reg nr 10377272, Peterburi tee 81, 11415 Tallinn, Estonia. Phone +372 622 0077. E-mail matek@matek.ee, <http://www.matek.ee>
Pärnu factory Savi 12, 80010 Pärnu, Estonia. Phone +372 447 7888.