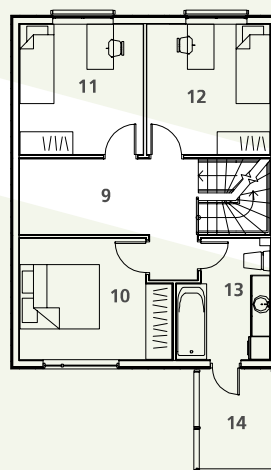
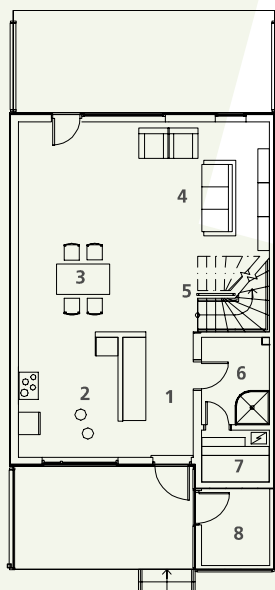




A modern 10-apartment row house. The building is structured in three sections, two of them housing three apartments and one section has four apartments. The apartments are situated on two floors: the open-plan kitchen/living-room, the hall and sauna are on the ground floor. The bedrooms and bathroom are on the first floor.

Dimensions for one unit 6,95 x 19,20 m
Total area for one unit 121,3 m²



1.	Hall	6,4 m ²
2.	Kitchen	8,6 m ²
3.	Dining room	6,7 m ²
4.	Living room	23,4 m ²
5.	Hall	6,6 m ²
6.	Shower-bath	4,1 m ²
7.	Steam-room	2,5 m ²
8.	Storeroom	3,8 m ²
9.	Hall	11,5 m ²
10.	Bedroom	12,1 m ²
11.	Bedroom	11,3 m ²
12.	Bedroom	11,3 m ²
13.	Bathroom	7,1 m ²
14.	Balcony	5,9 m ²

Copying and using the project in whatsoever manner is forbidden without permission of AS Matek.

AS Matek reg nr 10377272, Peterburi tee 81, 11415 Tallinn, Estonia. Phone +372 622 0077. E-mail matek@matek.ee, <http://www.matek.ee>
Pärnu factory Savi 12, 80010 Pärnu, Estonia. Phone +372 447 7888.