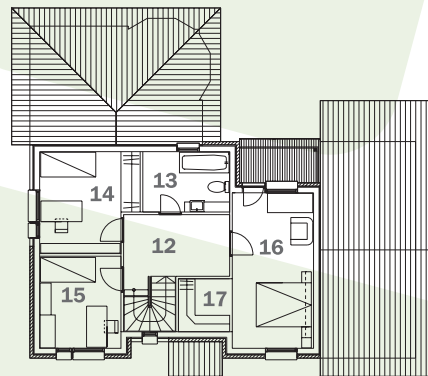
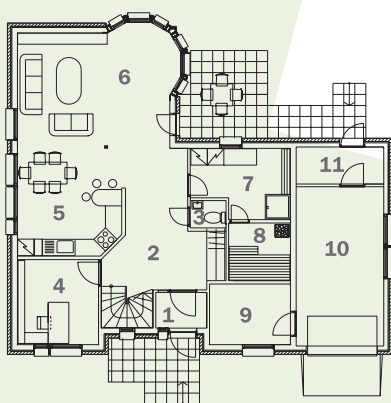




Functional, well lighted, comfortable, partly two-storied house "Saara" is best suited for a city environment. It can easily be modified into semi-detached house with or without garages.

Total area	165,6 m ²
Roof incline	22°
Dimensions	14,00 x 12,00 m



1	Vestibule	2,4 m ²
2	Hall	12,4 m ²
3	WC	1,3 m ²
4	Study	9,1 m ²
5	Kitchen	14,8 m ²
6	Living room	24,5 m ²
7	Household room	8,3 m ²
8	Steam-room	4,7 m ²
9	Technical room	6,5 m ²
10	Garage	18,5 m ²
11	Household room	4,3 m ²
12	Hall	9,2 m ²
13	Bathroom	6,9 m ²
14	Bedroom	12,4 m ²
15	Bedroom	9,9 m ²
16	Bedroom	16,7 m ²
17	Walk-in closet	3,7 m ²

Copying and using the project in whatsoever manner is forbidden without permission of AS Matek.

AS Matek reg nr 10377272, Peterburi tee 81, 11415 Tallinn, Estonia. Phone +372 622 0077. E-mail matek@matek.ee, <http://www.matek.ee>
Pärnu factory Savi 12, 80010 Pärnu, Estonia. Phone +372 447 7888.